

WALK ← ON

From Richard Long to Janet Cardiff

40 Years of Art Walking

INTERIM EVALUATION REPORT

PMG (Pitzhanger Manor Gallery & House) LONDON: 23 March – 5 May 2013

FIGURES

Visitors figures: 2600

Event: 448

Education: 333

TOTAL: 3381

WORKSHOPS - EVENTS

- **EDUCATIONAL WORKSHOPS**

- **Walk Out:**

- A rare opportunity for Year 10 Students from Northolt High School to create their own exhibition of works to be shown in the Studio Gallery at PM Gallery & House.

- **A tour of the exhibition at PM Gallery:**

- Professional artist, Alicja Rogalska, an experienced Artist-educator lead a tour of *Walk On* giving an introduction to the works and the themes of the show and then lead a creative workshop to facilitate the students responses to what they've seen.

- **Bespoke art workshops with professional artist in response to the exhibition at PM Gallery & House:**

- Walk On* artist Tim Knowles will give an introduction to his own work in the show and his practice in general and then lead a workshop at PM Gallery & House.

- **1 follow-up workshop based at school with a professional Artist:**

- A follow up workshop at Northolt School with Tim Knowles

- **EVENTS**

- **2 Tours of the exhibitions lead by the Curators** – followed by Curators' talk

- **PERFORMANCE**

The Long Walk Home: a series of encounters, walks and talks with artist Simon Pope in the footsteps of Soane's own long walks back to his home at Lincoln's Inn Fields. (May 4- 5th 2013)

QUOTES

Carol Sword (PMG Director) talking about one of the Walk Out exhibition

"All went swimmingly and as usual a little emotion was omitted by the parents of the students involved in one case the parent of a young girl who only came to London last November from Romania. (...) The head teacher of the school was particularly impressed at how well the students had responded to what was quite a complex theme".

From PMG comments book (27-04-13)

" Great to see a comprehensive exhibition of works by artist whose practise involve walking."

" Really interesting exhibition, I found the guided tour enhanced it a great deal. I am interested in seeing it again in Sunderland"

Please ask us for a copy of PMG comments book if needed.

PRESS

Online Interviews:

BBC News Entertainment & Arts

<http://www.bbc.co.uk/news/entertainment-arts-22025531>

Interview at BBC Radio London 94.9 - 11 March 2013 (listen 1hr35 mins in)

<http://goo.gl/Ohfvq>

Online review:

One Stop Arts Website

<http://onestoparts.com/review-walk-on-40-years-art-walking-pm-gallery-house>

London Evening Standard

<http://www.standard.co.uk/goingout/exhibitions/walk-40-years-art-walking-136761>

Online Listing:

Art slant London

<http://www.artslant.com/lon/events/show/258973-walk-on-40-years-of-art-walking?tab=EVENT>

Julian Opie Website

<http://www.julianopie.com/#/text/interview/3200>

Mike Collier website

<http://www.mikecollier.eu/project/walk-on>

Run Riot

<http://www.run-riot.com/art/walk-richard-long-janet-cardiff-%E2%80%93-40-years-art-walking>

PMG Website

http://www.ealing.gov.uk/info/200893/pm_gallery_and_house/686/exhibitions

Contemporary Art Society Website

<http://membership.contemporaryartsociety.org/programme/exhibition-tour-mike-collier-on-walk-on-from-richard-long-to-janet-cardiff-40-years-of-art-walking/>

CASS Website

<http://www.thecass.com/news-events/2013/march/walk-on>

Tracy Hanna Website

<http://www.tracy-hanna.com/News>

Celtic Trails Website

<http://www.celtic-trails.com/be-inspired/walk-on-40-years-of-art-walking/>

Newspapers and Magazine:

exhibitions

Ilya & Emilia Kabakov London
 Ambika P's bunker-like gallery is the setting for Ilya and Emilia Kabakov's installation *The Happiest Man* (work pictured). The idyllic vision of singing Russian peasants in Soviet-era propaganda films is obviously a far cry from the reality of those years, and appears here with a sense of irony. As with all the duo's work, the subject is the enduring appeal of escapist fantasy in the face of failed dreams. The widow of a little house where the happiest man lives looks out on the illusory paradise, which says as much about modern dreams as those in the former USSR. The skewed mirror worlds continue in Sproveri gallery's concurrent show of Kabakov paintings. **as Ambika P, NW1, to 21 Apr, Sproveri Gallery, W1, to 16 May**

Fiona Mackay Norwich
 At first, Fiona Mackay's paintings hark back to mid-century US abstraction. On the one hand, her work recalls Barnett Newman's stripes or Mark Rothko's hazy planes; on the other, the slightly later generation of colour field artists, such as Morris Louis or Helen Frankenthaler, who applied pigment to absorbent canvas so there was no point at which the paint ended and its fabric base started. Mackay brings experiences in making paint and its support one and the same up to date, parting a new aggy, domestic twist on what's often a male-dominated pursuit. Her paintings are created using batik dye and wax on very thin canvases. The results are unpredictable, giving a playfulness and freedom to Mackay's creations. **see *sunrise* Outpost Gallery, Tue to 21 Apr**

Metropolis: Reflections On The Modern City Birmingham
 It remains a curious fact that the amazing complexity of modern cities has rarely been convincingly captured in art. So this new collection with an urban theme is a welcome contribution. Man Kiao-chun's gigantic, photographic panorama of Beijing's rush hour sits with Mohamed Bourouissa's portraits of disaffected suburban Paris youth. Such critical urban perspectives are balanced by a Grazia Todini video (pictured) in which the nocturnal cityscape is seen as a hallucinatory dome of pleasurable visions. **more *cases* Birmingham Art Gallery, to 23 Jun**

In Cloud Country: Abstracting From Nature Leeds
 Curated by Iwona Blazwick, director of London's Whitechapel Art Gallery, and Diane Brown, the co-curator of Hatfield, this show encompasses four centuries of nature studies on paper. The overall theme is less landscape, more an intimate, engrossed engagement with natural forms and forces. There's a recent drawing by Italian sculptor Giuseppe Penone, for example, in which he re-visualises a barrel plank as a living tree. But we have to go back to 1803 for the most passionate engagement with the organic world, in the guise of a John Sell Cotman drawing (work pictured), which is deceptively simple and wonderful in its precision. **see Terrace Gallery of Hatfield House, to 23 Jun**

Northern Art Prize Leeds
 We'll have to wait until 23 May to find out who gets the £16,500 prize money but in the meantime the work of the shortlisted contenders for the Northern Art Prize is here for all to argue over. Margaret Harrison's feminist provocations (work pictured) are worth a bet, as are Rosalind Nashzeibi's video shorts. Emily Speed's sculptures and performances will appeal to fans of more riot-there art, while the collaborative duo Jaume Plensa & Tom O'Sullivan appear to question the operation of the art world itself with their work of vaudeville comedy and absurdist theatre. **see Leeds Art Gallery, to 18 Jun**

Kenneth Anger: Icons London
 Among the many achievements of his 80-plus years, Kenneth Anger made experimental films with the Rolling Stones that introduced Martin Scorsese to the power of a rock 'n' roll soundtrack. Yet it's his love-hate relationship with Tinseltown's gladiators side that Anger remains best known for. The kid who learned to dance with Shirley Temple grew up to be an occultist, visionary film-maker and gothic perfectionist, penning the hair-raising account of detachment from cinema's golden age, *Hollywood Babylon*. Giving an intimate insight into his influences and interests, Anger has here installed his movie memorabilia archive (pictured) just as it is in his LA home, in velvet-red and midnight-blue rooms. Largely focused on the baby-boom era, his treasures include photos of Errol Flynn and Bette Davis (see *music* for DW Griffith's *The Fall of Babylon*), and the original programme for *A Midsummer Night's Dream*, the 1935 movie adaptation in which Anger played one of the forest fairies, as *Spyth Magers*, W1, to 26 Apr

Robert Filliou: The Institute Of Endless Possibilities Leeds
 There's a playfulness to the late artist Robert Filliou's work that rarely finds in his more sober UK contemporaries; his maxim was that "art is what makes life more interesting than art". Associated with Fluxus, the 60s movement that rebelled against all fixed definitions of art, less about the object than its presentation and interpretation. Work here includes 16,000 dice (work pictured), with all sides unnumbered one. Obviously, to engage with Filliou's art, game-players have to be in a pretty enigmatic frame of mind. **see Henry Moore Institute, to 23 Jun**

Walk On London
 The actors in this participative show take the simple act of walking in unexpected directions. Some works are truly epic, as with Marina Abramovic and Ulay's *The Great Wall Walk*. The duo began their 2,000km hike from opposite ends of China's Great Wall, met in the middle and, in a grand symbolic gesture, finished their relationship as artistic collaborators and lovers. Others appear slightly more prosaic: Brittain's famed "walking artist" Richard Long takes lengthy rambles through the countryside, making ephemeral sculptures as he goes with stones he finds on the roadside; while, in a film from the late 1960s, Bruce Nauman simply goes walking in an exaggerated manner, around a square he's drawn in his studio. Perhaps the most intrepid journey is the one undertaken by an urban fox, let loose after dark to run through the National Portrait Gallery's corridors. In Francis Alys's *The Nightwatch* (work pictured), as *PM Gallery And House*, W5, to 5 May

36 The Guide 30 Mar-5 Apr 2013

Art

TIME FOR A STROLL

With the release of 'The Art of Walking' book and the opening of the 'Walk On' exhibition, we map the artists who have put their best foot forward in the name of art



Catherine Tate
Nov-Mar 2013

In Tate's 2008 film commission, the French tightrope walker Didier Pasquetti stepped out into the void between two high rises of the now demolished Red Road estate in Glasgow and visibly walked on air.



Julia Roberts
Jul 2012

The Mexican-based Begian artist walked around Mexico City with a magnetic toy dog that eventually became covered in metal debris from the street.



Robert Caplan
Sep-Nov 2007

Caplan's creative stride walks to be listened to through headphones in various locations. For 'Walk On' People's Museum in 1991, following in his dead daughter's footsteps.

'The Art of Walking: A Field Guide' is published by Black Dog, £16.95. Walk On is at Fitzhanger Manor ▶ May 5.

Ilya & Emilia Kabakov: The Happiest Man

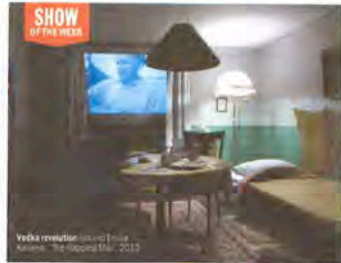
★★★★

Ambika P3 ▶ Apr 21.

Soviet Russia – all propogams, propaganda and isolation – isn't everyone's idea of a utopian idyll. But as you descend into Ilya and Emilia Kabakov's vast, desolate cinema installation where every cheerless technician mumbles his hollow idiosyncratic songs and showed grain on screen, your heart might start to yearn for the warm bosom of mother Russia.

Row upon row of empty cinema seats fill the cavernous underground expanse of Ambika P3 in the middle of the space stands a room. A single bed, an armchair, a dining table – it's a solitary home, with a lone window looking onto the flickering screen.

If you choose to enter the room, watching the colourful Soviet-era films from the comfort of a tatty old sofa, you become 'the happiest man' of the show's title. You lose



Vecka revylerat (in and out)
Kunsten, 14 October-16 Nov 2013

yourself in the space, participating in a false and glossy past, becoming a man for whom propaganda is reality and work is freedom. But if you choose to watch the films from the cinema seats, you remain a mere witness. A passive observer on a rickety chair, aware of the gap between truth and fiction.

The immersive desolation is uncomfortable. You want to participate, to become that happy man in that little Russian room, if

only to believe in the happiness on screen. Heaving under the weight of history and nostalgia, the Kabakovs have created an incredible theatre of solitude where propaganda's idealised view of the world is almost fantastically real. That's their trick, turning the disparity between truth and fiction into a choice. And it's not an easy one. Eddy Frankel

THE BOTTOM LINE Communism never looked so good.

Verne Dawson: Apalachicola to Zirconia

★★★★

Victoria Miro ▶ Apr 20.

Between 1539 and 1542, Hernando de Soto led a monkey band of Spanish conquistadors on a fatal expedition through the south east corner of North America, battling against the environment and indigenous peoples in a quest for the fabled fountain of eternal youth.

It's the sort of story that might make for a great movie. What it doesn't make, though, is a particularly successful series of paintings, at least as conceived by Verne Dawson – full of naked natives

bathe in moonlit lakes or wondering with animals through dreamy Elysian landscapes. The problem is that these romantic state-of-nature motifs simply come off as too unreconstructed, too instantly familiar.

Dawson's painting style is partly to blame. The American has been doing the whole fantastic, folkloric



Walking Beauty Verne Dawson
Wade Boyer Gallery, 2013

thing for a while now. In a crisp and vaguely Bosch-like style. In these latest works, though, his technique has become looser, more sketchy and sketchy – with foliage reduced to hunched daisies, and quick figures that shimmer sensually against blue skies. And yet, there's a nagging feeling that all of this newly

discovered freedom and spontaneity is simply another sort of stereotype – an extension of the paintings' of innocent primitives and their sensuous, liberated, unaffected ways. Gabriel Dawoud

THE BOTTOM LINE Flocking makes leave a lot to be desired.

George Catlin: American Indian Portraits

★★★★

National Portrait Gallery ▶ Jun 23.

A fascination with Native Americans was probably common in early nineteenth-century America. But George Catlin's belief that it was wrong to wipe the country clear of its original inhabitants was very unusual. The Pennsylvanian was a self-taught painter with one main subject. He was also a fearless traveller who recorded scalp dances and buffalo hunts.

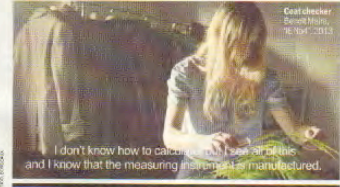
Using a limited palette – lots of browns and reds – he made portrait after portrait, demonstrating the variety and profusion of hairstyle, facial type and decoration. There are flowing beards and moccasins, shields and feathers and some beautifully outlandish pipes. After the field trips came the Indian Gallery. Hundreds of his portraits toured the eastern states before heading to Europe. Bankruptcy and crooked attempts to recoup his riches followed, but his achievement stands. Early in this chronologically garbled exhibition,



Chief Red Jacket
Catlin, 1820
National Portrait Gallery, London

there's a double image of a chief before and after white contact. The brave has exchanged native dress and dignity for a tailcoat and a pocketful of bottles. It's a succinct portrait of the tragic destruction of a noble culture. *Anna Kaplan*

THE BOTTOM LINE Draw and bold documents of a vanishing race.



Cast Member
Benoit Maire
16 Feb 2013

I don't know how to categorise this. It's simple and I know that the measuring means it's manufactured.

Benoit Maire: Weapon

★★★★

David Roberts Foundation ▶ May 11.

If you think life is a constant struggle to understand our existence, you're probably a philosopher. If you think our efforts to measure are that existence distract from life, congratulations, you're a French philosopher, in which case, you will appreciate Benoit Maire's 'ambiguously titled' 'Weapon'.

For the rest of us, Maire's study of existential malaise seems rigid at first. A stack of stones and quartz, a classical bust made of soap, and impasse vines of hovering

fossils and crystals, are all quiet, minimal things. Theoretically dense, they're also minutely restrained.

As a result, the best moment comes when Maire focuses up a little. The video – showing a man making bombs out of iPhones – is engrossing and humorous. It's still difficult, but is accessible in its deconstruction of our need to comprehend our lives. The liberal transformation of books into bombs is a powerful metaphor for our intellectual self-escape. If only everything in Maire's work was this clear. *Eddy Frankel*

THE BOTTOM LINE Angry, mo!

The best exhibitions opening this week

New this week

Ambika P3 University of Westminster, 35 MaryAbbey Rd, NW1 5LS. 7911 5876, www.p3artlabitions.com. **Charing Cross**, Tue-Sat, Sun noon-5pm.

Ilya & Emilia Kabakov: The Happiest Man Film-based installation showing idyllic images of rural Russia from the '30s to the '50s in a cinema setting. The duo (also showing at Sproevien gallery) explore escapist ideas of fleeing from reality and seeking isolation in dark times. **Wed Mar 27 ▶ Apr 21.**

Barbican Centre Silk St, EC2Y 8DS. 7638 8831, www.barbican.org.uk. **Barbican**, Mon-Sat 9am-11pm; Sun noon-11pm.

Geoffrey Farmer: The Surgeon and the Farmer This Canadian artist will fill the Barbican's 50-metre Carve gallery with a vast collection of paper-collaged hand puppets. Grouped together to look like a procession, the tiny sculptures are made from pages of books, imbuing them with a strong sense of narrative. **Tue Mar 26 ▶ Jul 28.**

David Zwirner 24 Grafton St, W1S 4EZ. 3538 3155, www.davidzwirner.com.

Green Park, Tue-Sat 10am-6pm. **Marcel Dzama: Puppets, Powers and Prophets** Work in various media by the Brooklyn-based artist, known for his unique visual language and cast of curious, cartoonish characters. **Fri Apr 5 ▶ May 11.**

Gazelli Art House 39 Dover St, W1S 4HW. 7491 8816, www.gazelliarthouse.com. **Green Park**, Mon-Fri 10am-6pm; Sat 11am-7pm; Sun noon-5pm.

The Tainted Intricately carved wood sculptures by Italian artist Anon Demetz are shown alongside Korean Shan Hu's shattered columns and ceramics. **Thu Mar 28 ▶ Jun 5.**

ICA The Mall, SW1Y 5AH. 7930 3647, www.ica.org.uk. **Charing Cross**, Tue, Wed 11am-6pm; Thur 11am-6pm; Fri-Sun 11am-6pm.

Bernadette Corporation: 2,000 Wasted Years This will be the first UK retrospective exhibition to focus on the eclectic artistic collective, which emerged in the recession-hit New York of the early 1990s. Their output has included a high-end fashion label, a magazine and a collectively written novel. **Wed Mar 27 ▶ Jun 9.**

The Independent Group In 1952 a group of artists, architects, authors and music producers met at the original ICA, organising a series of innovative exhibitions uniting the worlds of design, painting, literature and music. This show highlights important works by the group's key members including Eduardo Paolozzi and Richard Hamilton. **Wed Mar 27 ▶ Jun 9.**

National Portrait Gallery St Martin's Place, WC2H 0HE. 7306 0055, www.npg.org.uk. **Charing Cross**, Mon-Wed 10am-6pm; Thu, Fri 10am-8pm; Sat, Sun 10am-6pm.

Jacob Epstein: Portrait Sculptor Thirteen works by the great sculptural portraitist are united for a mini-survey of his busts. Recognisable for his many public works in London, this show will include heads of Joseph Conrad and Jawaharlal Nehru. **Sat Mar 30 ▶ Nov 24.**

Riffmaker 79 Book St, W1F 9SL. 7436 0000, www.riffmaker.org. **Old Curious**, Mon-Sat 10am-6pm.

Adam de Boer: Jalan Works inspired by the artist's dual American/Indonesian cultural heritage, resulting in a collection of Japanese painting and contemporary American art. **Thu Apr 4 ▶ May 4.**

PH Gallery & House Wakefile Park, Metton Lane, W5 5EQ. 8507 1227, www.coding.gov.uk/jmgalleryandhouse. **Edling Broadway**, Tue-Fri 11pm-Sat 11am-5pm.

Walk On A show about walking in art that takes in the performances of Marina Abramovic, Bruce Nauman and Richard Long among others. The curatorial theme is partly inspired by long walks Sir John Soane took with his friend JMW Turner at Fitzhanger Manor. **Wed Mar 27 ▶ May 5.**

Wellcome Collection 183 Euston Rd, NW1 2BE. 7611 2222, www.wellcomecollection.org. **Euston**, Tue-Sat 10am-6pm; Thur, Sun 11am-6pm.

Source: Outlander Art from Japan The Wellcome's major spring exhibition features over 300 works from 46 artists. Organised in conjunction with the Dutch Museum of Psychiatry, this show looks at self-sought artists who exist on the edges of Japanese society. **Thu Mar 28 ▶ Jun 30.**

For more listings and reader reviews, visit timesout.com/art

62 Read more reviews and listings and book tickets at timesout.com/tickets

Time Out - 8 April 2013

Time Out - 8th April 13

Read more reviews and listings and book tickets at timesout.com/tickets

Time Out - 25th March 13

Music Reich's minimal tribute to the 'Head

By CHRIS MUGAN

News that American composer Steve Reich's latest composition has been inspired by the work of Radiohead makes a fitting tribute to a band that has done more than any other current rock outfit to bring down the boundaries between their genre and classical music.

Radiohead guitarist Jonny Greenwood had played over the backing tracks to Reich's *Electric Counterpoint* at a festival in Poland in 2010. He had also composed soundtrack works for the films *There Will Be Blood* and *We Need to Talk About Kevin*, so after a meeting between the two, Reich was intrigued enough to check out Radiohead's back catalogue.

Reich's piece references two tracks by the Oxford band, the dissonant, guitar-free "Everything in Its Right Place" and "Jigsaw Falling Into Place". "It was not my intention to make anything like variations on these songs, rather to draw on the harmonies and some melodic fragments and work them into my piece," he said. Steve Reich's *Radio Rewire* world premiere, Royal Festival Hall, London SE1 (www.southbankcentre.co.uk), 5 March; then touring



Art/A short stroll inside an artist's imagination

By CHARLOTTE CRIPPS

Why not enjoy walking in the confines of an art gallery? A collection of work created and inspired by the act of walking, includes Julian Oyle's continuous computer animation, *Summer, 2012* (above left), presented on a 55" LCD screen, which offers a virtual countryside walking experience. It will go on show as part of *Walk On* at London's PM Gallery next month. "There have been many exhibitions about individual artists, such as Richard Long and Hamish Fulton, whose work is based around walking but no recent overview which has explored walking as an art form," says the show's co-curator Cynthia Morrison-Bell. Other works include a photograph of performance artist Marina Abramovic's journey along the Great Wall of China for her work, *The Lovers* (above) with collaborator Ulay. *Walk On*, PM Gallery 7 House, London W5 (020 8567 1227) 27 March to 6 May

Film/Not all zombies love eating human flesh

By STEPHEN P KELLY

Which zombie fiction trending so heavily, you could be forgiven for thinking that this fascination with the undead, much like the vampire before it, may be in danger of being done to, well, death. For where else is there to go? The answer, perhaps, lies no longer in aiming for the head, but getting inside it. Or at least that's what Jonathan Levine's new zom-rom-com, *Warm Bodies*, suggests. A film that is leading the pack in telling us that zombies are people too.

Adapted from Isaac Marion's eponymous book, it tells the story of R (Nicholas Hoult, above), a young man who is a bit more self-aware than the typical corpse. In this *Romeo and Juliet* love story he falls in love with Teresa Palmer's Julie (above), a human. He is still a slave to the basic instinct to eat people, of course - he just doesn't feel that particularly great about it. It's an interesting take. For years, these stories have blurred the line between zombie and human for satirical effect - George Romero's sequel, *Dawn Of The Dead*, for example, took a swipe at the brain-dead nature of consumerism by having his creations return to a mall through "instinct" - but very rarely a relatable one.

"I value the genre's ability to reflect us," says Levine who directs and writes. "And by going inside R's head, it allows us to empathise with him and ask ourselves, 'What does it mean to be alive?' Also, by humanising him, it allows us to explore other themes such as tolerance and acceptance." *Warm Bodies* is on nationwide release

CULTURAL LIFE



Barbara Taylor Bradford
Novelist

Books

I have just re-read *Bring Up the Bodies* by Hilary Mantel. Enjoyed it even more the second time around. I seem to be addicted to history and just read *Killing Lincoln* (*The Shocking Assassination That Changed America Forever*) by Bill O'Reilly & Martin Dugard. I found the second historical non-fiction by O'Reilly & Dugard, *Killing Kennedy* (*The End of Camelot*) very moving. I wept at the end because of the utter senselessness of JFK's untimely death.

Films

I went to a private screening of *Lincoln*. My husband and I staggered out, having been swept away by the film. We felt we'd been in the presence of President Lincoln himself, so extraordinary was Daniel Day-Lewis's performance. I found *Les Misérables* slightly too long. Hugh Jackman made up for that.

Music

I am a huge fan of Kiri Te Kanawa and particularly love her renditions of Verdi and Puccini. I always enjoy the three tenors Carreras, Domingo and Pavarotti.

Television

When I'm not watching news programmes, I just can't resist Maggie Smith as the Dowager Countess in *Downton Abbey*. I love country-house family sagas. I guess that's why I write them.

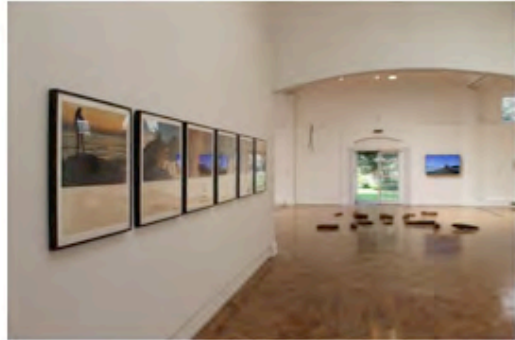
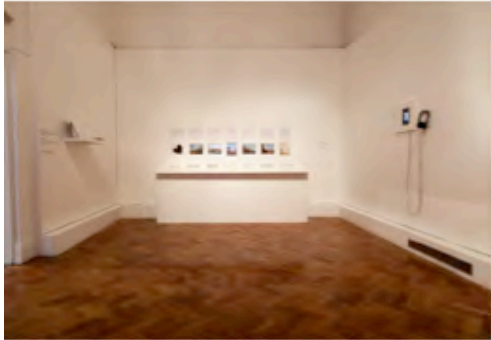
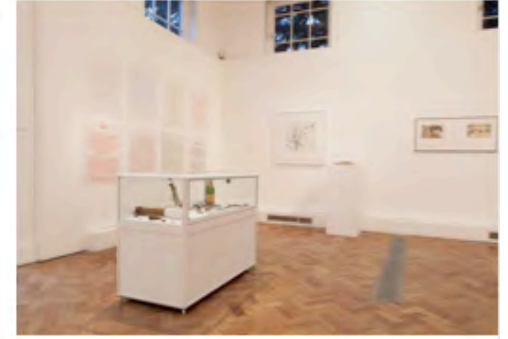
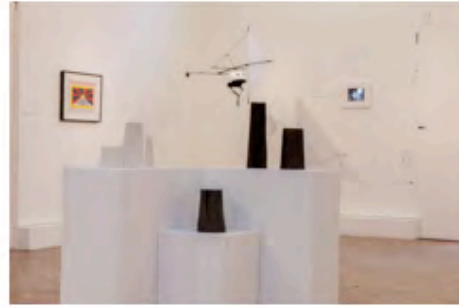
Barbara Taylor Bradford's novel *Secrets from the Past* is published by HarperCollins on 28 February

Interview by Charlotte Cripps

The Luvvies BY BIRCH



PHOTOS



Photos George Benson



Simon Pope's *Long Walk Home* PM Gallery & House, May 2013

For more photos please contact us or visit [ACTE website](#).

Northern Gallery of Contemporary Art, SUNDERLAND 1 June – 31 August 2013

FIGURES

Visitor figures 11,120

WORKSHOPS – EVENTS

- **EDUCATIONAL WORKSHOPS**

- South Tyneside College visit and artist lead workshop: 8 young people with learning difficulties aged 16+ and 2 tutors
- Grindon Infant School extended project 150 children aged 3 to 7. A six-week project led by artist Pauline Taylor, using Sarah Cullen's Drawing Boxes and making their own versions
- Sensory Sketching workshops for Sunderland Primary Schools: 135 pupils aged 9-11 and 15 teachers from local schools, organised with Sunderland Museum and Winter Gardens, in Mowbray Park. These walks involved recording notes on smells, textures, sounds and sights and base drawings on their findings

- **TALKS**

- Mike Collier Curator's tour for Contemporary Art Society Members
- Exhibition tour for International students on English studies at Northumbria University
- Talk for MA Photography Students at Sunderland University

Informal Education/Community

- Walker Challenge, Gallery visit and exhibition – Adults with mental health problems
- Local heritage Group –

- Family Art Session at NGCA Parents, grandparents, guardians and children aged 3+: drop in to the gallery and create their own walking themed artwork. Weekly free 2 hour workshop led by professional artists.

- Outreach activity at Rocker Beach

Quotes

Twitter:

'Watching Francis Alys' video Guards @NGCAsunderland #poignant & #irreverent; #pomp, #circumstance & #absurdity, #control & #freedom amazing.'

'Great exhibition on at the 'NGCA Sunderland at the moment. Check it out if you get the chance. #LoveYourLibrary.'

'NGCAsunderland fun workshop with year 6 today for 'Walk On – 40 years of Art Walking' – don't miss this fab show!'

'Walk On: 40 Years of Art Walking was/is incredible. Currently 'NGCAsunderland till 31 Aug then touring 2014 Birmingham, Southport, Plymouth.'

Notice board:

"One of the most interesting exhibitions I've seen. Lots of food for thought (and the camera) on future walks"

"Absolutely loved it!" – Thomas

"Great" – Rory

"Supreme!" – Alec

"Fascinating and thought provoking exhibition – really makes you think about journeys through life and spaces - and how we think about and use the spaces around us and how we interpret how others use this space."

"Made me think about things I don't think about but should. Reflection is what we do when we have time..."

“My feet carried me whilst my mind propelled.”

“Been to see this work twice. Awesome 😊”

“Marina Abramovic... meet you half way along Hadrians Wall for a pint! Xxx”

“Walking – made me think about my own walking in a different way. I’ll never walk down the road to work again without thinking of the topography, sounds and shapes I traverse.”

“It’s a very good exhibition. I would recommend it for any person that loved art. Congratulations.”

“Great to see such an in-depth show, much more to think about than expected. Reminds you to be mindful when you are out wandering – my daughter (4 year old) liked the ‘tiny man on the mountain’! Thank you.”

“WALK ON – what an expansive and challenging exploration. Each one could have occupied me for hours. Best foot forward!”

“Walk On – well done NGCA for bringing such a stimulating and thought provoking exhibition to the region - at last! Some art which isn’t a commodity to purchase but rather art which raises questions about how we live together in society.”

PRESS

Online Listing:

WALK

<http://walk.uk.net/portfolio/walk-on>

This is tomorrow magazine

<http://www.thisistomorrow.info/viewArticle.aspx?artId=1916>

The List

<http://www.list.co.uk/event/20418640-walk-on-40-years-of-art-walking-from-richard-long-to-janet-cardiff/>

Art Rabbit

<http://www.artrabbit.com/events/event&event=37594>

Festival of the North East

<http://www.festivalne.com/events/event/walk/>

Cornerhouse

<http://www.cornerhouse.org/bookstore/product/walk-on-from-richard-long-to-janet-cardiff-40-years-of-art-walking>

what's on critics' choice

Exhibitions

Rachel Campbell-Johnston

Patrick Caulfield
This survey show of Caulfield's work looks at how, through his mastery of vibrant colour and graphic elegance, he re-animates such traditional subjects as the still life or the domestic interior. There's a parallel show of Gary Hume's work revealing his continuing influence. **Tate Britain, Millbank, London SW1 (020-78878898) Wed, to Sept 1**

Bill Viola: Frustrated Actions and Fulle Gestures
That intangible boundary between the earthly and the transcendental, the brevity of life, and humanity's quest to discover its purpose remain the philosophical foundations of Viola's mesmerising video pieces in a major new show. **Blain Southern,**

London W1 (020-7493 4402), from Wed

Rory McEwan: The Colours of Reality
Pursuing a lifelong fascination with colour and light, the artist and musician Rory McEwan practices a sharply tuned and quintessentially contemporary focus to the old-fashioned practice of botanical painting, as this intriguingly multifaceted exhibition makes plain. **Shirley Sherwood Gallery of Botanical Art, Botanic Gardens, Kew (020-8332 5655), to Sept 22**

Visions of the Universe
From ethereal images of deep space to close-up views of our planetary neighbours, the technical complexities of science and the visions of art come together. Everything from the earliest drawings through to the latest pictures by Hubble and the Mars Curiosity Rover are put on display. **National Maritime Museum, London SE10 (020-8658 4422) Fri, to Sept 15**

Curiosity: Art and the Pleasures of Knowing
From Old Master drawings through the history of criminology to contemporary performances, a show that finds its inspiration in the cabinet of curiosity invites us to probe deeper into the lands of wonder. **Turner Contemporary, Margate (0844 8475910), to Sept 12**

Detail from Bill Viola's The Dreamers in his major new video show



Café Interior: Afternoon, 1972 by Patrick Caulfield, on show at Tate Britain

Walk On: 40 Years of Art Walking
This show explores the many and often surprising ways such a basic human practice has informed the work of artists from the 1960s to the present. **Northern Gallery for Contemporary Art, Sunderland (0191-561 1235), to Aug 31**

Michael Lundy: Saints Alive
The strange and often grisly legends of long-lost saints are returned to life in the huge kinetic sculptures of Lundy, who animates fragments of venerated bashing, whirling, and clanking constructions. **National Gallery, London WC2 (020-7747 2885), to Nov 24**

Houghton Revisited
The magnificent art collection of our first prime minister was sold and shipped to Russia. Now a star-studded selection of Old Masters takes an ontological trip home. **Houghton Hall, Norfolk (01603 598640), to Sept 29**

James Acaster, Sheep and MC Charlie Baker: Union Chapel, London N7 (020-7226 1666), today; Komedia, Brighton (0845 2538480); Tynes, Larnar, Sheffield (01423 551763) Wed

Live at the Chapel
Sometimes inspired, sometimes collique, always electrifying, Kevin Eldon headlines this monthly show, with other guests including

Stand Up For Women
Performers at this benefit night for the charity Eves include Jay Suttie, Sara Pascoe, Luisa Omielan, Abi Roberts, Mary Bourke, Brenda Gilbody and Bridget Christie. **Bloomsbury Theatre, London WC1 (020-7308 8822), Tues**

Book now Aziz Amir
Two years after his Soho Theatre shows, the American comedian returns to play his biggest British date yet, with his profile boosted by his role in the excellent TV sitcom *Parks and Recreation*. **Hammersmith Apollo, London W6 (0844 8788033), Jun 15**

Wagner Dreams
Kudos to Welsh National Opera for being the first British company to stage Jonathan Harvey's work about the final days of Richard Wagner: and his unfulfilled plans to write a Buddhist opera. **Pierre Audi directs. Languages sung include: Pali, Sanskrit and German. Welsh surtitles will unscramble the text. Water Mill Millennium Centre, Cardiff (029-2063 6464), Thur and Fri**

Cavalletta Rusticana/ Pagliacci
A red-blooded start to the season at Opera Holland

Dance

Debra Craine

Mayrining
The Royal Ballet season draws to a close with Kenneth MacMillan's historical epic about Austria's tragic Crown Prince Rudolf. What with sex and drugs, sadism and intrigue, it's a roller-coaster ride for its leading male dancer. And the pas de deux are through the roof. On June 5, Leanne Benjamin delivers her final performance before her retirement. **Royal Opera House, London WC2 (020-7304 4000), today, Wed and Thur**

Coppelia
Peter Wright's delightful production of the 19th-century rom-com is one for all the family. The tale of a mad scientist who tries to turn his mechanical dolls into living ones is filled with sweet dances and lovely music by Delibes. **Performed by Birmingham Royal Ballet, Birmingham Hippodrome (0844 338 5000), Tues, to 11**

Swan Lake
English National Ballet returns with Derek Deane's in-the-round staging of Tchaikovsky's great ballet – the largest production of its kind in the world. **Albion Hall, London SW7 (020-875 4015/0344), Jun 12-13 8.00/3.40**

Chagall: Modern Master
The artist who took cows and cockerels, husbands and wives and whole villages and threw them up in the air amid a kaleidoscopic glow of colours is the focus of a substantial new show. **Tate Liverpool, 0845 60470833, Jun 8-Oct 6**

Opéra
Neil Fisher

Wagner Dreams
Kudos to Welsh National Opera for being the first British company to stage Jonathan Harvey's work about the final days of Richard Wagner: and his unfulfilled plans to write a Buddhist opera. **Pierre Audi directs. Languages sung include: Pali, Sanskrit and German. Welsh surtitles will unscramble the text. Water Mill Millennium Centre, Cardiff (029-2063 6464), Thur and Fri**

The Perfect American
Walt Disney lies on his deathbed but will his name live for ever – or will that be left to Mickey? **It's directed at the Edinburgh International Festival by John Fullames and starring Angel Blue as the seductive heroine. King's Theatre, Edinburgh (0131 4732000), Aug 30 and 31**

Northern Ballet
Lots of variety on this new mixed bill, which showcases work by the Dutch choreographer Hans van Manen and the American Mark Godden, alongside a piece from Northern Ballet's own Kenneth Tindall. **Northern Ballet & Phoenix Dance Theatre, Leeds (0132 208008), Wed, to Fri**

Rainforest
Catching Cunniff's famous 1968 meditation on pure dance, which has an electronic score by David Tudor and a wacky design of helium-filled pillows by Andy Warhol. **Barbican Art Gallery, London EC2 (020-7638 8891), Wed**

Book now
Swan Lake
English National Ballet returns with Derek Deane's in-the-round staging of Tchaikovsky's great ballet – the largest production of its kind in the world. **Albion Hall, London SW7 (020-875 4015/0344), Jun 12-13 8.00/3.40**

Swan Lake returns to the Royal Albert Hall



Coliseum, WC2 (0871 910200), today and Thur, in rep, to Jun 28

Aziza in concert
Chester Opera Group unearth what is probably Verdi's least performed opera, set in the era of Spanish conquistadores and Incas. **Majella Cullagh sings the title role. Queen Elizabeth Hall, London SE1 (020-7960 4200), Sun**

Book now
Amezcua's opera gets a jazzy new spin in Olga Hewitt's hybrid piece, directed at the Edinburgh International Festival by John Fullames and starring Angel Blue as the seductive heroine. **King's Theatre, Edinburgh (0131 4732000), Aug 30 and 31**

Artists put their best foot forward

Wake up to the importance of walking at the Northern Gallery for Contemporary Art. Katy Wheeler strolled along to find out more

WALKING – it's a simple act most of us do every day. But in its simplicity can inspire intriguing works of art. From the rigours of walking in the Himalayas to casual walks through the North East countryside, walks across the world have inspired the artworks on display in Walk On at the Northern Gallery for Contemporary Art (NGCA).

The everyday inspiration for the pieces, which range from notebooks and photos to sculpture, film and paintings, makes it one of the more accessible exhibitions to feature at the Fawcett Street gallery. Each of the journeys depicted was done on foot, with the execution of each piece of art a unique interpretation. Sunderland University lecturer Mike Collier draws inspiration for his abstract paintings and drawings from local walks and the wildlife and fauna he encounters along the way.

"I did walks with a number of natural history groups," he said. "About 50 of us did nine walks over five weekends. "A lot of what we learnt was not just what the species are but how they got their names and what the old colloquial names are. "Often the paintings become a fusion of



STEP ON: The exhibition is called Walk On and draws upon the great outdoors as its theme.

word, sound and images." His featured works also includes pastels inspired by the pages of diaries from one of our greatest poets. "I did some work with the Wordsworth Trust earlier in the year where I worked with the diaries of Dorothy Wordsworth and the manuscripts of William Wordsworth. "That's what led to me developing the idea of the notebooks. The artist added: "For Wordsworth, walking was a key part of his poetry, it was his way of making sense of the world. "There are lots of different ways artists have engaged with the world through walk-

ing, when you're moving something happens to your sense of space, all your senses are activated." Mike is among nearly 40 international artists featured in the exhibition. For some, walking itself is the artform. American artist Bruce Nauman uses film to convey how walking shows the world who we are. In the late 60s the artist created a number of happening performances works using only his body, the space of his studio and what were then the first video cameras available to create a "pedestrian ballet". Mike says it's a coup for Sunderland to have such well-respected artists on show. "This is the sort of show you would see in any major city in the world. "By having an exhibition about something everyone does it's a way many people can get into what they might view as difficult art work. "It's a good point of entry".

Walk On is at the NGCA in the City Library and Arts Centre, Fawcett Street, until August 31. For more information visit www.ngca.co.uk.



MAN OF LETTERS: Artist Mike Collier.



MAP IT OUT: One of the exhibits.



LOST AND FOUND: Pieces on display.



CONTOURS: The route to art.

Get on fast track to inspiration
Walk On is organised in conjunction with Walk On: Art-Walking Northumberland, a series of participatory art walks and events held across Northumberland over the summer. The programme's main event is an Art Walking Weekend at Highview, Tarsset, Northumberland, on July 13 and 14, with an artist-led walk and a discussion forum chaired by the W.A.L.K research unit at Sunderland University. Other highlights include The Resilience of the Wild, an exhibition of work by Mike Collier at the Customs House, South Shields, from Saturday until July 21. Visit www.warc.org.uk for details.

Large kitchen appliances and home entertainment

Sale now on

Reserve Online & Collect In store

In store Online Mobile

Currys PC World
we can help

1. Subject to availability. DSG Retail Ltd, Heylands Avenue, Hemel Hempstead, Herts. HP2 7YF. Registered in England, No. 504877.



Richard Long - A Line in the Himalayas

ART

Walking into world of art

Artists have been putting their best foot forward. Alan Sykes pulls on his hiking boots to join in a celebration of walking art

Walking, as a basic human activity, has been portrayed in art since the start – think of the processions on the Elgin Marbles or even figures from pre-historic cave paintings.

It is only relatively recently that walking has become art in its own right and a series of exhibitions and events in Sunderland, South Shields and Northumberland look at some of the most significant aspects of that new trend.

In Sunderland, Walk On: From Richard Long to Janet Cardiff, 40 Years of Art Walking is a major survey exhibition including some of the greatest of contemporary art.

Turner Prize winner Richard Long was one of the first artists to use walking to make simple, and usually temporary, alterations to landscape to create artworks.

Here you'll find his 1975 A Line in the Himalayas, a photo of a beautiful mountain scene with a line of stones leading up towards the snow line and the blue black sky.

Not all his works involve lengthy journeys. His England, of 1968, is simply a photo of a cross made by mowing grass full of

buttercups.

Other artists share his belief in simplicity. Richard Wentworth documents chance findings in the street, using everyday objects to construct intriguing images.

Bruce Nauman is represented here with his 1967-8 video Walking in an Exaggerated Manner Around the Perimeter of a Square, which shows the artist doing exactly what the title suggests.

On the epic scale, Marina Abramovic and collaborator Ulay walked towards each other

from opposite ends of the Great Wall of China, documenting their 90-day journey to a meeting in the middle.

By contrast, last year 100-or-so of us, including exhibition co-curator Cynthia Morrison-Bell, assembled on Newcastle Quayside to walk slowly on car park lines, covering up to three yards in two hours.

We were taking part in one of Hamish Fulton's 'Slowwalks'. Fulton has written that 'a walk has a life of its own and does not need to be materialised into an artwork'.

But he does use them as artworks and his slowwalks have variously featured in



Bruce Nauman, Walking in an Exaggerated Manner, 1969

photographs, text and sketches.

North East artist Mike Collier, a co-curator of the Sunderland exhibition, walked from South Shields to Tarslet recording the wildlife and researching local history.

The results can be seen in The Resilience of the Wild, an exhibition at the Customs House, South Shields. Mike is also showing recent works produced in Cumbria.

Meanwhile Visual Arts in Rural Communities (VARC) is organising Walk On: Art-Walking Northumberland, a weekend of walks, exhibitions and other events.

Included is Chris Drury's Infinity Walk, where the artist and up to 20 others will walk for three hours in large looped infinity shapes as dusk turns to darkness.

David McCracken, who has been farming at Tarslet for 30 years, will lead a walk to an artwork created by LEO, who was artist-in-

residence at VARC last year.

Participants will focus on the landscape through a farmer's eyes, looking at grass growth, potential dangers to livestock and the condition of boundary walls.

Ingrid Pollard is represented in Sunderland and at Highgreen in Tarslet.

In Sunderland she shows her Wordsworth Heritage poster, exploring the relationship between the rural landscape and her experience as an urban black person.

Currently VARC artist-in-residence, she had a chilly winter. For the Walking Weekend she will lead a group on a two-hour walk using a Claude Mirror – a black-tinted convex mirror traditionally used by artists to help paint landscapes – to reflect on people's relationship

between the landscape and artists' depictions of it.

Further afield, VARC has commissioned a new exhibition from Tim Knowles, who in May walked in Kielder forest for eight hours through levels of plantation dating back to 1927, filming as he went. His video can be seen at Kielder Castle visitor centre.

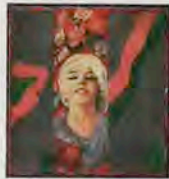
Tim is also organising a walk called Path of Least Resistance, where participants carrying GPS loggers will make their way downhill like water.

In Berwick, the reopened Gymnasium Gallery is showing Catherine Yass' High Wire, a video installation showing French high wire artist Didier Pasquette walking between two Glasgow high rise blocks.

It's appropriate that the North East in general and Northumberland in particular (the only county where a World Heritage Site coincides with two national walking trails – the Hadrian's Wall Trail and the Pennine Way) should host so much activity linking walking to art.

VARC's Art Walking weekend, July 13-14, centres on Highgreen, Tarslet (www.varc.org.uk/walk-on); Walk On: Richard Long to Janet Cardiff, 40 Years of Art Walking is at the NGCA, Sunderland, until August 31; Mike Collier, The Resilience of the Wild, is at Customs House, South Shields, until July 2; Tim Knowles' Forest Walk is at Kielder Castle until July 28; Catherine Yass' High Wire is at Berwick Gymnasium Gallery until September 15.

exhibitions



● Pauline Boty Wolverhampton

Pauline Boty has become a legendary art world figure. She's known for her charismatic beauty and tragic death in 1966 at the age of 28. Diagnosed with leukaemia during pregnancy, she refused chemotherapy and died soon after giving birth to her daughter. Mixing with such male luminaries as Bob Dylan, Peter Blake and David Hockney, she had been a darling of the swinging 60s scene. So it's about time that her work as an artist is now, at long last, being reassessed in a show that reveals art not seen for 40 years. How Boty would have developed creatively had she lived into artistic maturity is hard to imagine, yet there is an open-ended experimental spirit in her surviving paintings and collages that indicates a sensuous touch rare amid the more clinical pop art clan. **ROBERT CLARK**
Wolverhampton Art Gallery, Sat to 16 Nov

● Tom Pitt: Between Object And Place Derby

Tom Pitt stood out in last year's prestigious Liverpool John Moores Painting Prize exhibition for his modest-sized yet engagingly mysterious image of a flight of steps seemingly suspended in an abstract void. This, his first solo show, should further establish his reputation as a painter of illusionistic intrigues. Working on board, he

builds up subtly coloured surfaces in layers that are often sanded and scraped back to evoke the wear and tear of time passing. Pitt sets up perspectives that trick our eyes into believing these are three-dimensional views, although the places he pictures remain virtually abstract in their lack of familiar props. There are unmistakable paths,



passages and gate-like structures but the overall atmosphere is of a disorienting dream. **RC**
Tarpey Gallery, Castle Donington, Sat to 13 Jul

● Sophie von Hellermann: Elephant In The Room Colchester



Sophie von Hellermann's paintings are loose, dreamy creations where a haze of pastel watery pigment might depict celebs from magazine

pages, literary heroes or subjects from theoretical science alike. At first blush they can seem as light-headed as pink fizz. Make no mistake, though, the girliness hits hard: a sort of lipstick in the eye to a male-dominated tradition where sanctified subjects get a laborious treatment. This show takes figures

of speech as its starting point, including the eponymous overlooked elephant (pictured). Things get more cryptic with *Cold As A Witch's Tit*, a 7.5 metre, 3D pyre of paintings depicting hundreds of women killed by Essex's notorious Witchfinder General. **SKYE SHERWIN**
First Site, to 26 Aug

● Merlin James London

In Merlin James's paintings, traditional subject matter such as wispy sea scenes, nudes or railway bridges, get an unconventional treatment. He mines art history, drawing on work by famous names such as Courbet, Titian or Poussin alongside under-sung talents like French-Russian painter Serge



Charchoune. There's no straightforward quotation or homage; he puts his medium through its paces, from stripping it back to

bare-bones materials or applying pigment so thick it threatens to overwhelm its filmy support. Summing up this Glasgow-based artist's output can feel like a fool's errand; what unites it all, though, is his interest in the stuff of painting. **SS**
Parasol Unit, NI, Thu to 10 Aug

● Anthony Caro London

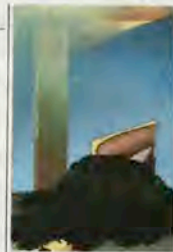
When it comes to art world peaks and troughs, even Britain's greatest living sculptor™ doesn't always have it easy.

Anthony Caro's grand plan for a three-block-long public sculpture on New York's Park Avenue fell by the wayside. Not one to let good work go to waste, he's turned sections from the project into sculptures in their own right. These hulking rusted



metal girders, pipes and pieces of agricultural technology have evolved from designs meant to be seen while travelling along the street, and - as with all of Caro's work - things evolve

as you move along and around. Thrusting slabs of slanted steel suggest a cityscape of skyscrapers and construction sites. Meanwhile, a huge pronged form looks ready to dig, like the lost tool of an ancient race of gardener giants, now warped and eroded having spent aeons in the ground. **SS**
Gagosian Britannia Street, WCI, Fri to 27 Jul



● Moda WK Newcastle upon Tyne

The WK of the exhibition title refers to the little-known early 20th-century British painter Winifred Knights. Here, Holly Antrum, Nadia Hebson and Titania Seidl (work pictured) try to rescue Knights's reputation by using their own paintings, photographs and texts as a kind of collective mixed-media biography. So three contemporary artists pay tribute to one who lived and worked through a period in which becoming a successful woman artist was far from easy. Knights's most known painting, now in the Tate collection and referred to here, is *The Dehugo* (1919), an angulated take on the biblical scene set against a backdrop of Clapham Common. It's a haunting image, all overcast greys with hints of impending menace. In their own individual ways, Antrum, Hebson and Seidl cast back over almost a century to share Knights's apocalyptic dread in a spirit of female fellow feeling. **RC**
Vane Gallery, to 29 Jun

● Gary Hume, Patrick Caulfield London

Twenty-five of Gary Hume's gloss-on-aluminium paintings, as brilliant as a freshly waxed car bonnet and as flat as a billboard, chart the artist's career to date. For all the apparently impersonal surface gleam, Hume's approach is quirky and idiosyncratic. A painting inspired by Angela Merkel abstracts the German chancellor to something resembling a lemon against an oval expanse of mint green. Hume's painting is paired here with that of 1960s upstart Patrick Caulfield (work



pictured), who shares his love of line and bold, flat colour. Particularly inspired by the Spanish cubist Juan Gris's treatment of still lifes

and interiors, Caulfield turned his surroundings into stylised images with strong black outlines. **SS**
Tate Britain, SW1, Wed to 1 Sep

● Walk On: 40 Years Of Walking Art Sunderland

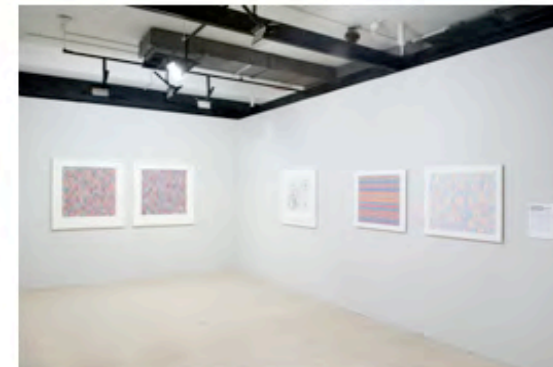
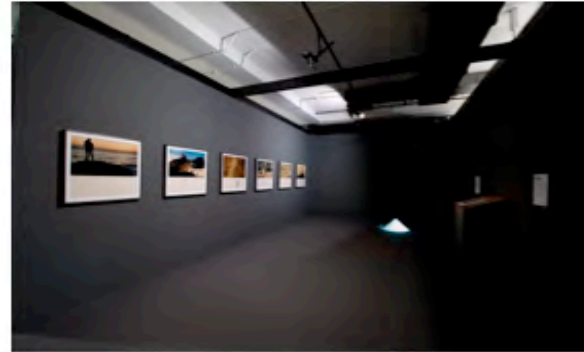
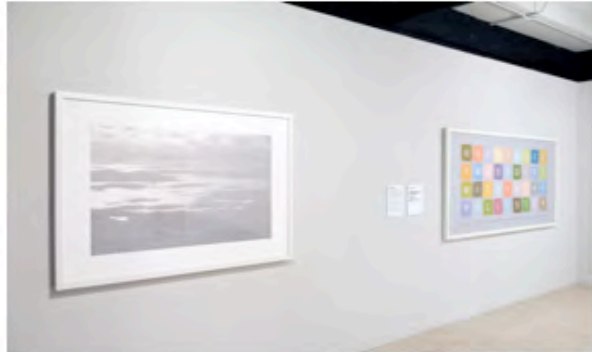


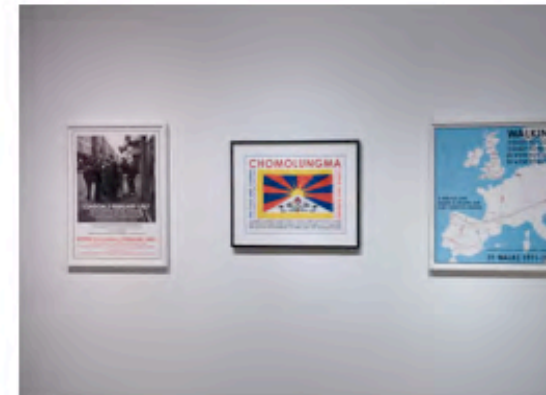
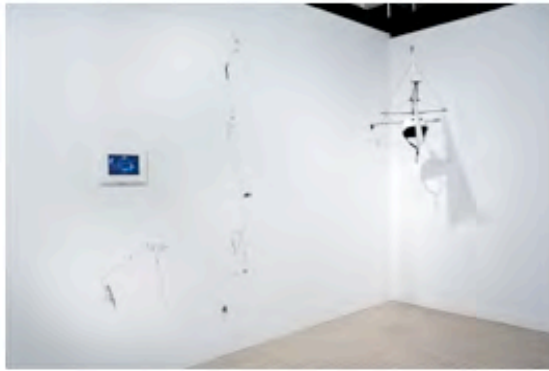
It is a century and a half since the symbolist poet Charles Baudelaire celebrated aimlessly wandering about the streets of Paris as a form

of creative exploration. His *flâneur* (stroller) was a precursor of the surrealist spirit of much radical 20th-century art and the work in this delightful show picks up the story of artistic walking from the 60s onwards, a period increasingly inflected by cross-cultural migrations and ecological concerns. For Richard Long, the

countryside trek became a way of paying homage to the disappearing wilderness, but the most intriguing work here extends the tradition of Baudelaire's proto-surrealist wanderings into an age of high-tech recording gadgetry. **RC**
Northern Gallery For Contemporary Art, Sat to 31 Aug; touring to 12 Dec

PHOTOS





For more photos please contact us.

WALK ON NORTHUMBERLAND WEEKEND

For images please visit [Art Circuit Website Gallery Section](#)

- ART WALKING Northumberland at Highgreen, was a participatory weekend event, part of the Walk ON exhibition that took place on the 13th -14th July 2013 and was part of the Festival of the North East

This unique two-day event at Highgreen (house of VARC, Visual Art in Rural Community) brought together invited artists to lead walks with people from other disciplines for whom walking is central. Together they shared their different approaches with the public through participatory walks, talks and workshop.

- With almost 200 visitors, from this country and as well as Japan and Australia, Walk On - Art Walking Northumberland weekend was a big success.

"I found the art walks insightful and refreshing and even though you're given a perspective to think about, that perspective, I felt, actually led to really interesting spaces in myself and in an environment that is so different that the environment I'm use to."

Female - Freemantle, Near Perth, West Australia

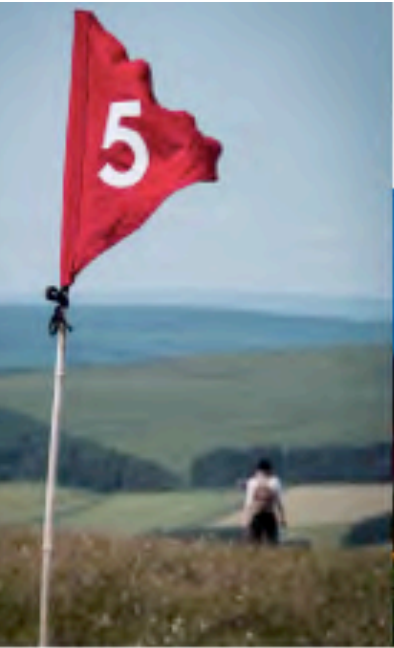
"It made me consider the natural line around me more often than I would have normally, it make you realise that sometimes when you are walking, you walk very blindly and you just walk to your destination, you just switch off.... Here, you certainly look at what is around you."

Female, Newcastle

Fore more information please also visit VARC website:

<http://www.varc.org.uk/walk-on/highgreen/>

Photos by Mark Pinder



SATELLITE VENUES:

We were please to commission and enable the following works and shows as part of Walk On Northumberland programme

For more information please visit VARC website:

<http://www.varc.org.uk/walk-on/berwick-upon-tweed/>

- Catherine Yass multi-channel video installation High Wire, was shown at the Berwick Gymnasium, Berwick Upon Tweed (courtesy of Artangel)
Photos by Mark Pinder



- Tim Knowles FOREST WALK was shown at Kielder Castle 15th June - 28th July 2013. The work was specially commissioned for Walk On Northumberland.
- Julia Barton performance ' Heavy Plant Crossing Expedition ' was at the National Trust's Wallington House on 21-22 June

'ON WALKING' CONFERENCE:

UNIVERSITY OF SUNDERLAND AND GALLERY FOR CONTEMPORARY ART. 28-29 JUNE 2013:

The last decade seen an upsurge in the study of walking across a wide range of disciplines and many walking-related events and research groups have been established in the arts and within academia. This two-day conference, held at the University of Sunderland, was organised by the research group **W.A.L.K.** (Walking, Art, Landskip and Knowledge – www.walk.uk.net) in association with **WALK ON - From Richard Long to Janet Cardiff: Forty Years of Art Walking**, a major international exhibition at the Northern Gallery for Contemporary Art. Its aim was to provide a critical and discursive meeting-point for artists, writers, thinkers, and academics who are engaged in the study of walking, documenting the many diverse approaches to the field.

ON WALKING examined and interrogated the practice and process of walking in all its cultural, ethnographic, poetic, and geographical ramifications. It brought together innovative and speculative ideas on walking and considered walking in relation to landscape, social, cultural, artistic, and geographical constructions of space.

Over 80 artists/curators/architects/ethnographers/designers/social historians from around the world (Canada, USA, South America, Spain, France, Italy, Holland, Hong Kong, Australia and Japan) attended the conference and presented a series of wide-ranging papers. We are currently in the process of collating the written versions of the papers ready to publish on-line in December. We will also be selecting a number of the papers for further publication in a new Art Editions North book next year.

On the evening of the 28th June, we held a preview event for delegates at the Walk On exhibition at the NGCA. This consisted of a Curators' Tour and Artists' Talks followed by Wine Reception, a Talk by Tom Chivers, and a Poetry Reading by Alec Finlay. The artists who talked about their work included: ATUL BHALLA , BRIAN THOMPSON, BRYNDIS SNÆBJÖRNSDOTTIR, CLARE QUALMANN (*walkwalkwalk*), MARK WILSON, MIKE COLLIER, RACHAEL CLEWLOW, TIM BRENNAN, WRIGHTS & SITES (STEPHEN HODGE, SIMON PERSEGHETTI, CATHY TURNER, PHIL SMITH)

Future Touring Venues 2014

Mac Birmingham- February - April 2014

The Atkinson, Southport - April – July 2014

Plymouth City Museum and Art Gallery, and other venues across the city. – August - December 2014